

# ColorSober

Synthetic Mica based high chroma effect pigments  
for industrial applications



JOINTCOLOR GROUP (HK) CO., LIMITED  
顏庄集團（香港）有限公司。



## About JointColor

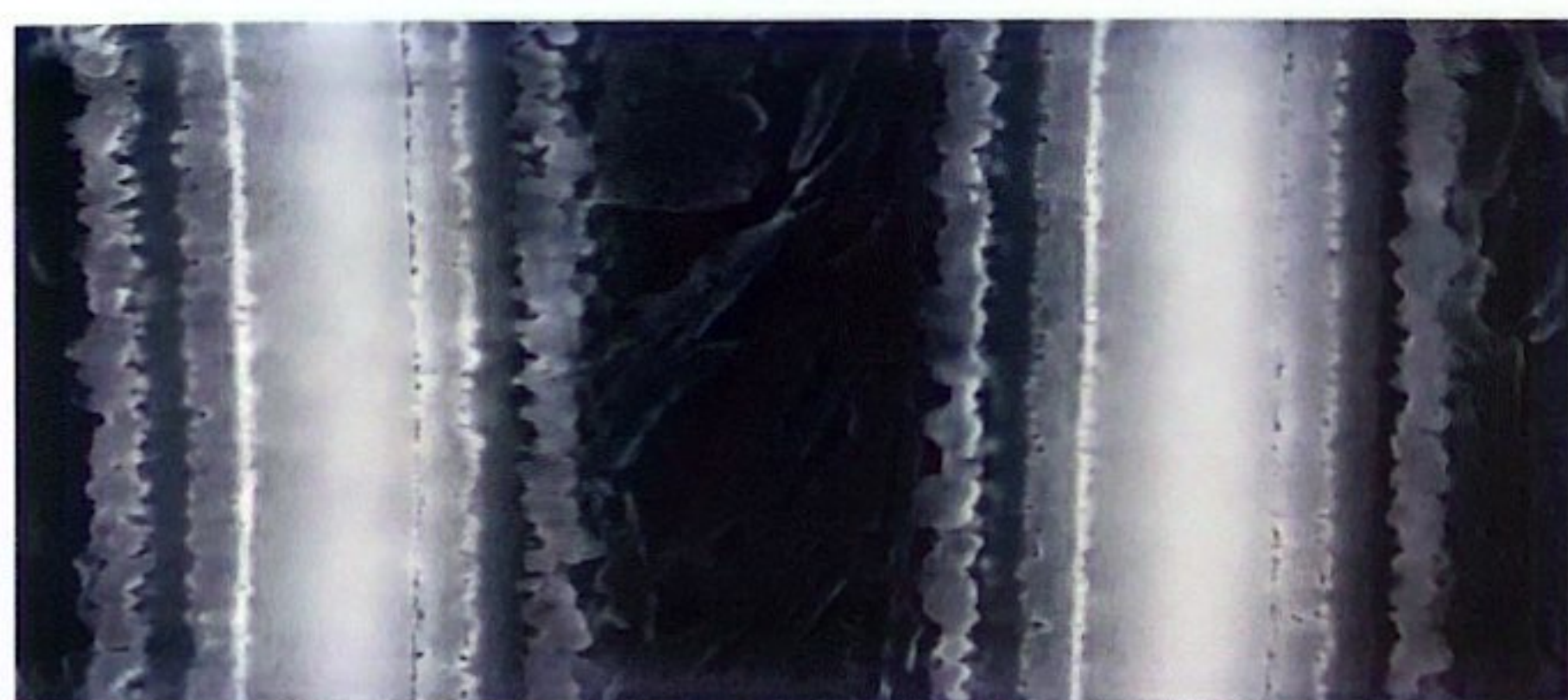
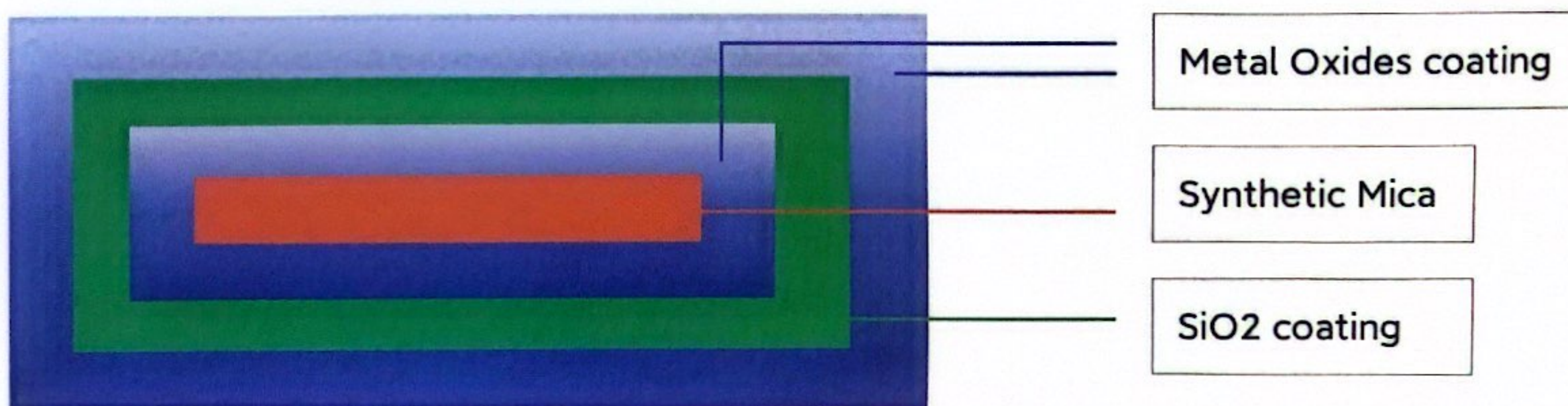
JointColor is a professional supplier of pearl effect pigments , glitter pigments and multi-functional mica fillers in China, it is an integrated researching, manufacturing,sales and marketing organization under the aegis of JointColor Group (HK) Co., Ltd.,holding more than dozen patents of invention, having over 30 years experience in this field, offering over 600 products for cosmetics application, offering more than 500 products for coatings, inks & plastics, having well equipped R&D and application labs expertly supporting a number of industries including coatings, printing, plastics and cosmetics.

We adhere to the "Dedication, Cooperation, Innovation" corporate philosophy, constantly innovate to provide customers with series customized products to meet our customer demand, in order to cope with the increasingly fierce market competition, to create our customers a commercial success.



## ColorSober Series

ColorSober is based on synthetic mica substrate, coated with TiO<sub>2</sub>, Iron Oxide and their combination, in between the metal oxides coating , we coated a thin layer of SiO<sub>2</sub>, this SiO<sub>2</sub> layer makes the product more transparent, higher reflection and higher chroma.



The layer structure and thickness are designed by CACD system

## Features and advantages:

- Using a unique synthetic mica powder grinding and treatments technology,
- very strong and vivid bright effects.
- High purity due to synthetic mica substrate
- High chroma intensity
- High transparency

## Applications:

- Automotive OEM and Refinish coatings
- Architectural Coil Coatings
- Powder Coatings
- General Exterior Paints



## ColorSober Series



CB6620/CB6620WR 5-35 Pure Satin White



CB6621/CB6621WR 5-35 Pure Satin Gold



CB6623/CB6623WR 5-35 Pure Satin Red



CB6625/CB6625WR 5-35 Pure Satin Purple



CB6627/CB6627WR 5-35 Pure Satin Blue



CB6628/CB6628WR 5-35 Pure Satin Green



CB6325/CB6325WR 5-35 Pure Solar Gold



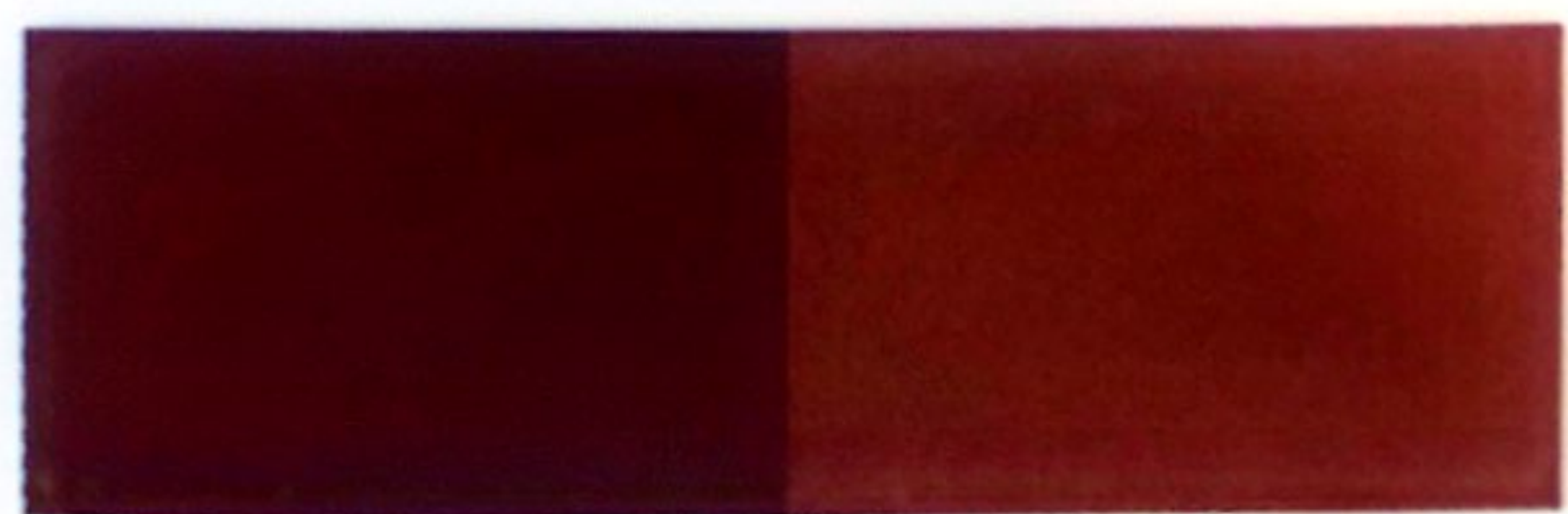
CB6531/CB6531WR 5-35 Pure Lava Bronze



CB6532/CB6532WR 5-35 Pure Lava Brown



CB6533/CB6533WR 5-35 Pure Lava Red-Brown



CB6535/CB6535WR 5-35 Pure Lava Red



CB6539/CB6539WR 5-35 Pure Lava Violet



Disclaimer: To the best of our knowledge, the above information is correct. However, the final decision for any material is incumbent on the user. All materials may have unknown hazards and should be used with caution. Although some hazards are described here, we cannot guarantee that these are the only hazards. Please make sure that this information is passed on to professionals.



**JOINTCOLOR GROUP (HK)CO., LIMITED**

**TEL : 0086-13861191431**

**E-mail: [yun.chen@jointcolor.com](mailto:yun.chen@jointcolor.com)**

**ADD:UNIT 802,8/F., CHINA INSURANCE GROUP  
BUILDING, 141 DES VOEUX ROAD CENTRAL,  
HONGKONG (999077)  
Issue in December 2024**