

ColorMover

Glass based color traveling pigments
for industrial applications



JOINTCOLOR GROUP (HK) CO., LIMITED

顏庄集團（香港）有限公司.

About JointColor

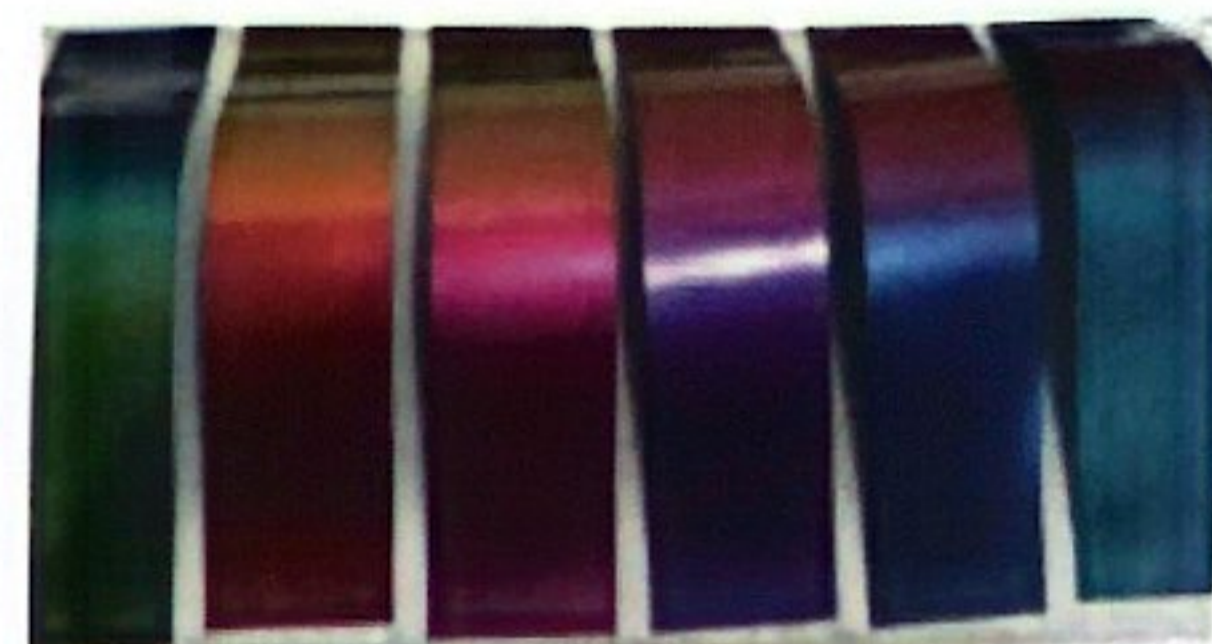
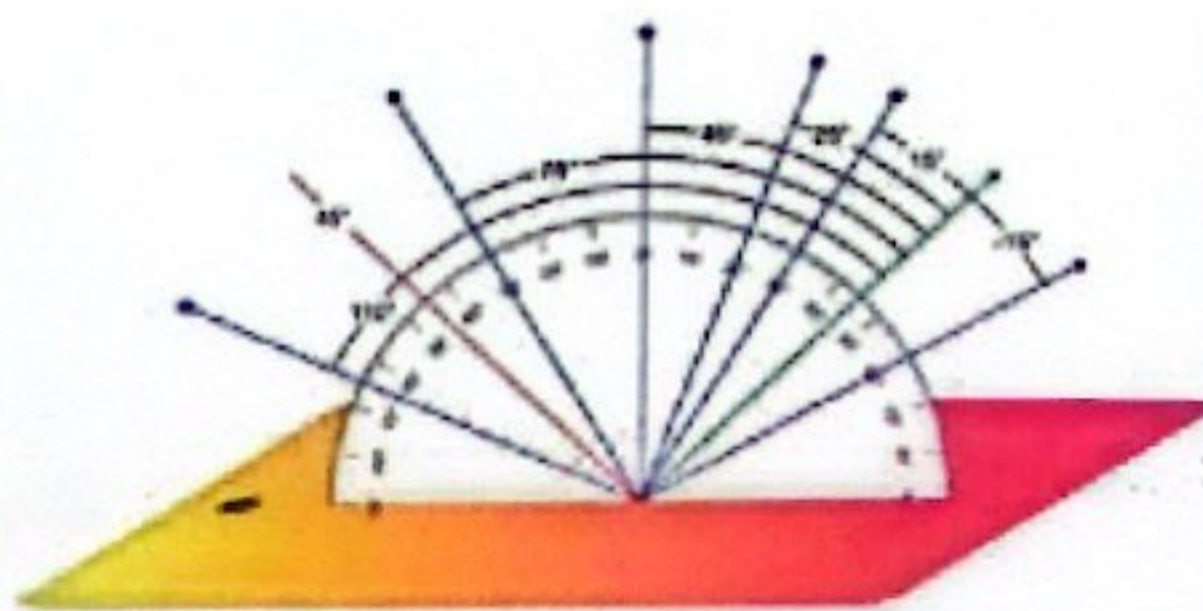
JointColor is a professional supplier of pearl effect pigments, glitter pigments and multi-functional mica fillers in China, it is an integrated researching, manufacturing, sales and marketing organization under the aegis of JointColor Group (HK) Co., Ltd., holding more than dozen patents of invention, having over 30 years experience in this field, offering over 600 products for cosmetics application, offering more than 500 products for coatings, inks & plastics, having well equipped R&D and application labs expertly supporting a number of industries including coatings, printing, plastics and cosmetics.

We adhere to the "Dedication, Cooperation, Innovation" corporate philosophy, constantly innovate to provide customers with series customized products to meet our customer demand, in order to cope with the increasingly fierce market competition, to create our customers a commercial success.



ColorMover Series

Excellent multi-layer coating structure based on glass flakes
Providing intensive optical variable colors effect, Patented



Main characteristics:

- Based on ultra thin borosilicate glass flakes with a narrow particle size distributions.
- High transparency and amazing color changing gradations
- Attractive crystal clear effects.
- Better color purity and higher brightness,
- Outstanding multi dimensions visual perceptions.
- Much more excellent dispersion ability
- Excellent weather resistance

Applications:

- Automotive OEM and Refinish coatings
- Architectural Coil Coatings
- Powder Coatings
- General Exterior Paints

ColorMover Series



CM8281/CM8281WR 10-40 G-Y-R



CM8282/CM8282WR 10-40 G-Y-P



CM8283/CM8283WR 10-40 R-P-B



CM8284 / CM8284WR 10-40 R-P-BG



CM8285/CM8285WR 10-40 R-B-G



CM8286/CM8286WR 10-40 B-G-Y

Disclaimer: To the best of our knowledge, the above information is correct. However, the final decision for any material is incumbent on the user. All materials may have unknown hazards and should be used with caution. Although some hazards are described here, we cannot guarantee that these are the only hazards. Please make sure that this information is passed on to professionals.



JOINTCOLOR GROUP (HK) CO., LIMITED

TEL : 0086-13861191431

E-mail: yun.chen@jointcolor.com

ADD:UNIT 802,8/F., CHINA INSURANCE GROUP

BUILDING, 141 DES VOEUX ROAD CENTRAL,

HONGKONG (999077)

Issue in December 2024